

Dystocia

dr. Yaseen m.

(Maternal and Fetal causes)



Dystocia

Maternal
causes



Fetal
causes





A-Maternal
causes

Inadequate
expulsive
forces

Inadequate size
of birth canal



Inadequate expulsive forces

```
graph TD; A[Inadequate expulsive forces] --> B[Uterine inertia]; A --> C[Weak abdominal straining]; B --> D["1-Primary<br/>-overstretching,<br/>Oxytocin and PGF2,<br/>senility,<br/>Nervous voluntary<br/>inhibition,hysteria,<br/>Premature birth,<br/>environmental<br/>disturbance"]; B --> E["2-Secondary<br/>(myometrial<br/>exhaustion)"]; C --> F[Age, Debility,<br/>pain, herniation<br/>of uterus.];
```

Uterine inertia

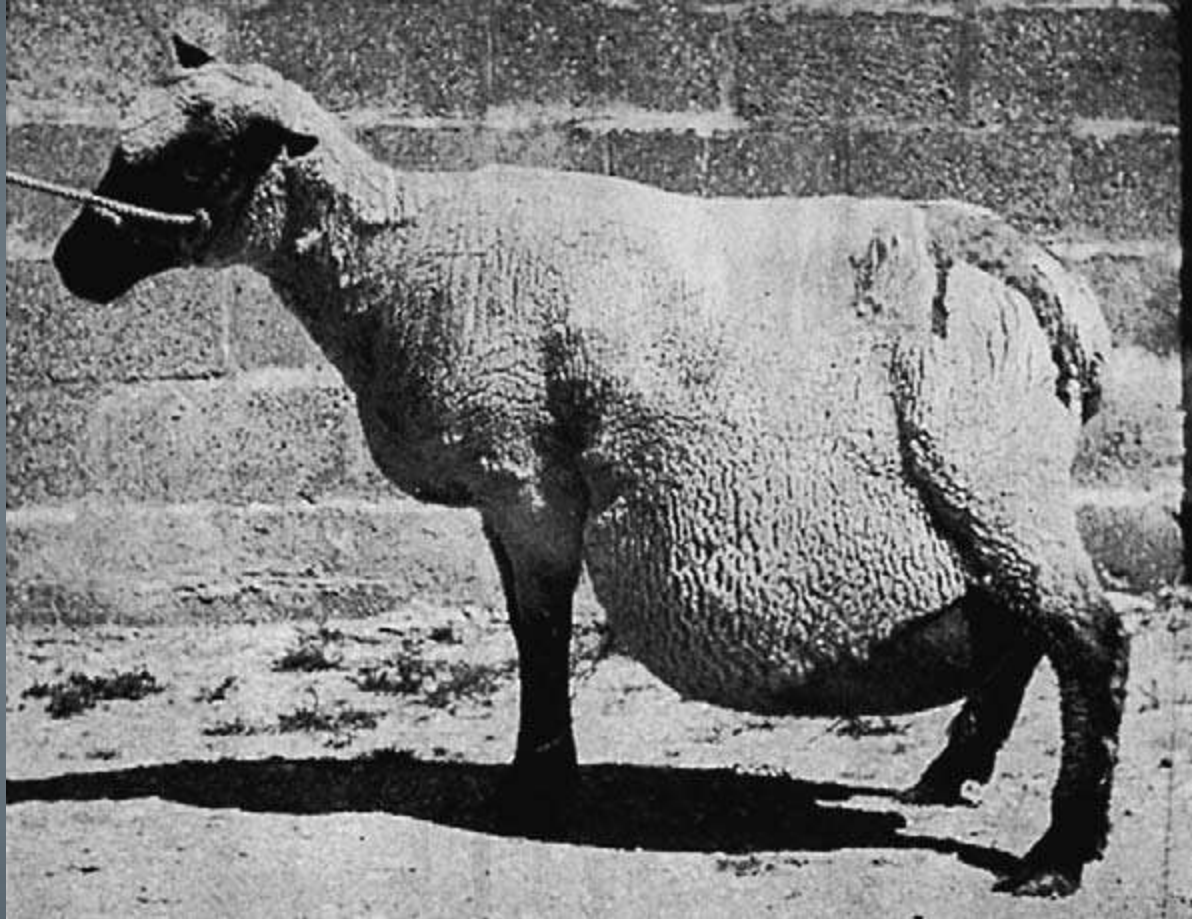
Weak abdominal straining

1-Primary

**-overstretching,
Oxytocin and PGF2,
senility,
Nervous voluntary
inhibition,hysteria,
Premature birth,
environmental
disturbance**

**2-Secondary
(myometrial
exhaustion)**

**Age, Debility,
pain, herniation
of uterus.**



Inadequate size of birth canal

Incomplete dilatation of birth canal

1-Uterus
Torsion

2. Cervix: Inertia
Hormonal imbalance
Fibrosis.

3. Vagina :Congenital defect Fibrosis,
Neoplasm/Cysts, Prolapse, Excessive pelvic fat

4. Vulva: Congenital defect, Fibrosis
,Immaturity, Failure of dilation.

Inadequate pelvis

Immaturity,

fracture

A photograph of a foal lying in a bed of straw. A diagram is overlaid on the image, showing a hierarchical structure of text boxes. The top box is 'B-Fetal causes', which branches into 'Oversize' and 'Faulty disposition'. 'Oversize' further branches into 'Relative and Absolute', 'Congenital anomalies', and 'Fetal pathology: ascites, Emphysema'. 'Faulty disposition' branches into 'Presentation, position, Posture.'.

**B-Fetal
causes**

Oversize

**Faulty
disposition**

**Relative and
Absolute**

**Congenital
anomalies**

**Fetal
pathology:
ascites
,Emphysema**

**Presentation,
position,
Posture.**

